



Presentation to JSSBC for:

# Nashua Middle Schools Projects

Nashua, New Hampshire

January 27, 2022

*“Building a diverse learning community by encouraging students to open their eyes to explore, their minds to create, and their hearts to accept.”*



# Agenda

1. Nashua Middle School Project Overview
2. Fairgrounds Middle School
3. Pennichuck Middle School
4. New Middle School

## AGENDA |

*“Building a diverse learning community by encouraging students to open their eyes to explore, their minds to create, and their hearts to accept.”*

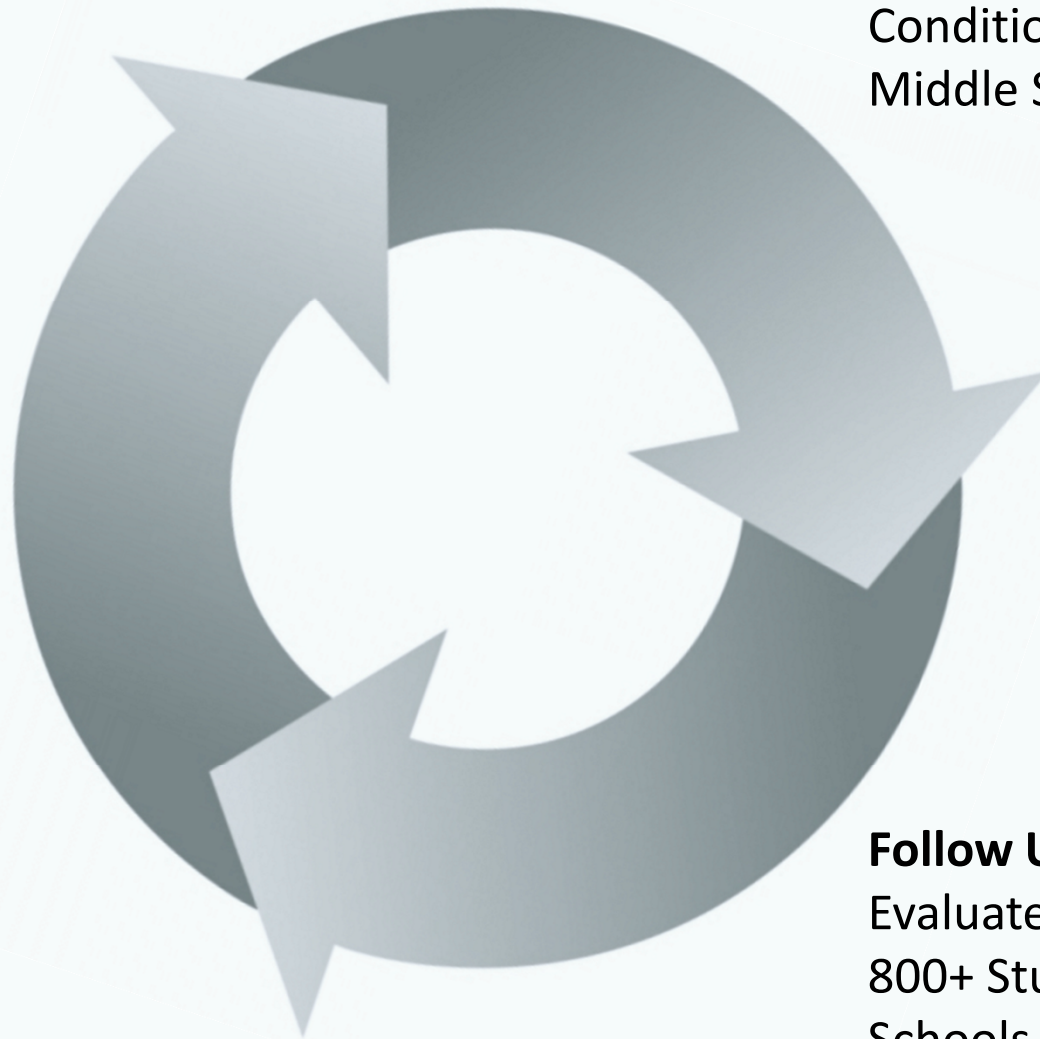


# NASHUA MIDDLE SCHOOLS PROJECT OVERVIEW



*“Building a diverse learning community by encouraging students to open their eyes to explore, their minds to create, and their hearts to accept.”*

**Initial Objective:**  
Discover and Address  
Deficiencies at Elm  
Street School



**Follow Up Objective:**  
Review Facility  
Conditions at All 3  
Middle Schools

**Follow Up Objective:**  
Evaluate a model for (3)  
800+ Student Middle  
Schools

**OVERVIEW |**

*“Building a diverse learning community by encouraging students to open their eyes to explore, their minds to create, and their hearts to accept.”*



# BUILDING | SITE FACILITY ANALYSIS PROCESS



## OVERVIEW |

*“Building a diverse learning community by encouraging students to open their eyes to explore, their minds to create, and their hearts to accept.”*

.....

# PROGRAMMING PROCESS



## OVERVIEW |

*“Building a diverse learning community by encouraging students to open their eyes to explore, their minds to create, and their hearts to accept.”*

.....

# OPTIONS CONSIDERED - OPTION #1

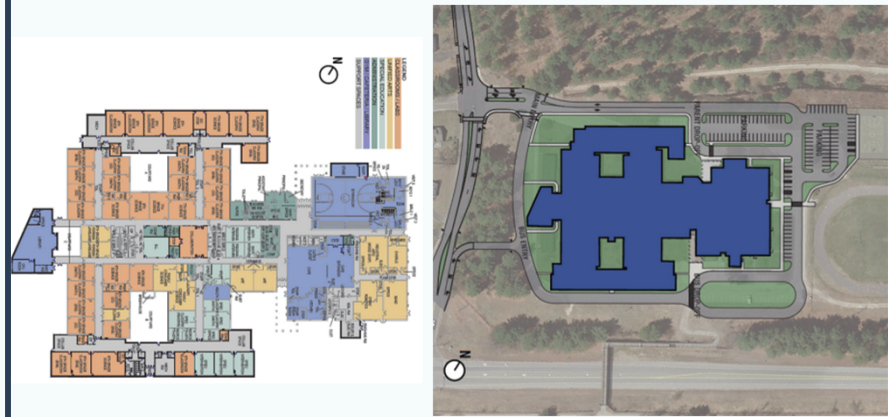
## ELM STREET MIDDLE SCHOOL RENOVATIONS AND ADDITIONS



## FAIRGROUNDS MIDDLE SCHOOL RENOVATIONS AND ADDITION



## PENNICHUCK MIDDLE SCHOOL RENOVATIONS AND ADDITIONS



## OVERVIEW |

*“Building a diverse learning community by encouraging students to open their eyes to explore, their minds to create, and their hearts to accept.”*



# OPTIONS CONSIDERED - OPTION #2 (CHOSEN)

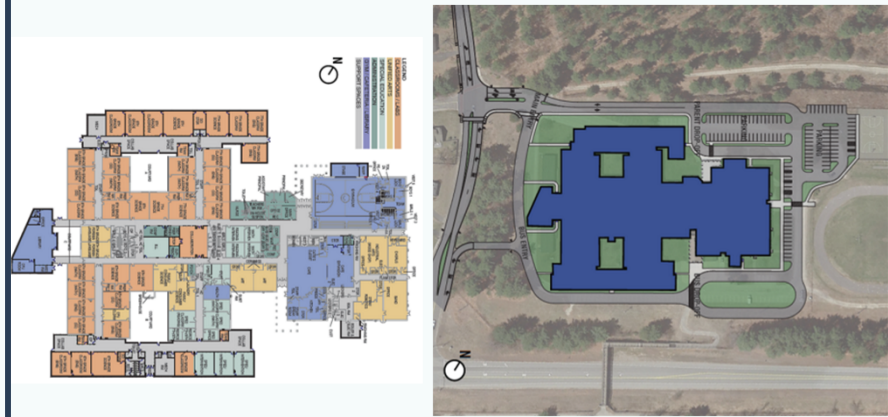
## NEW MIDDLE SCHOOL



## FAIRGROUNDS MIDDLE SCHOOL RENOVATIONS AND ADDITION



## PENNICHUCK MIDDLE SCHOOL RENOVATIONS AND ADDITIONS

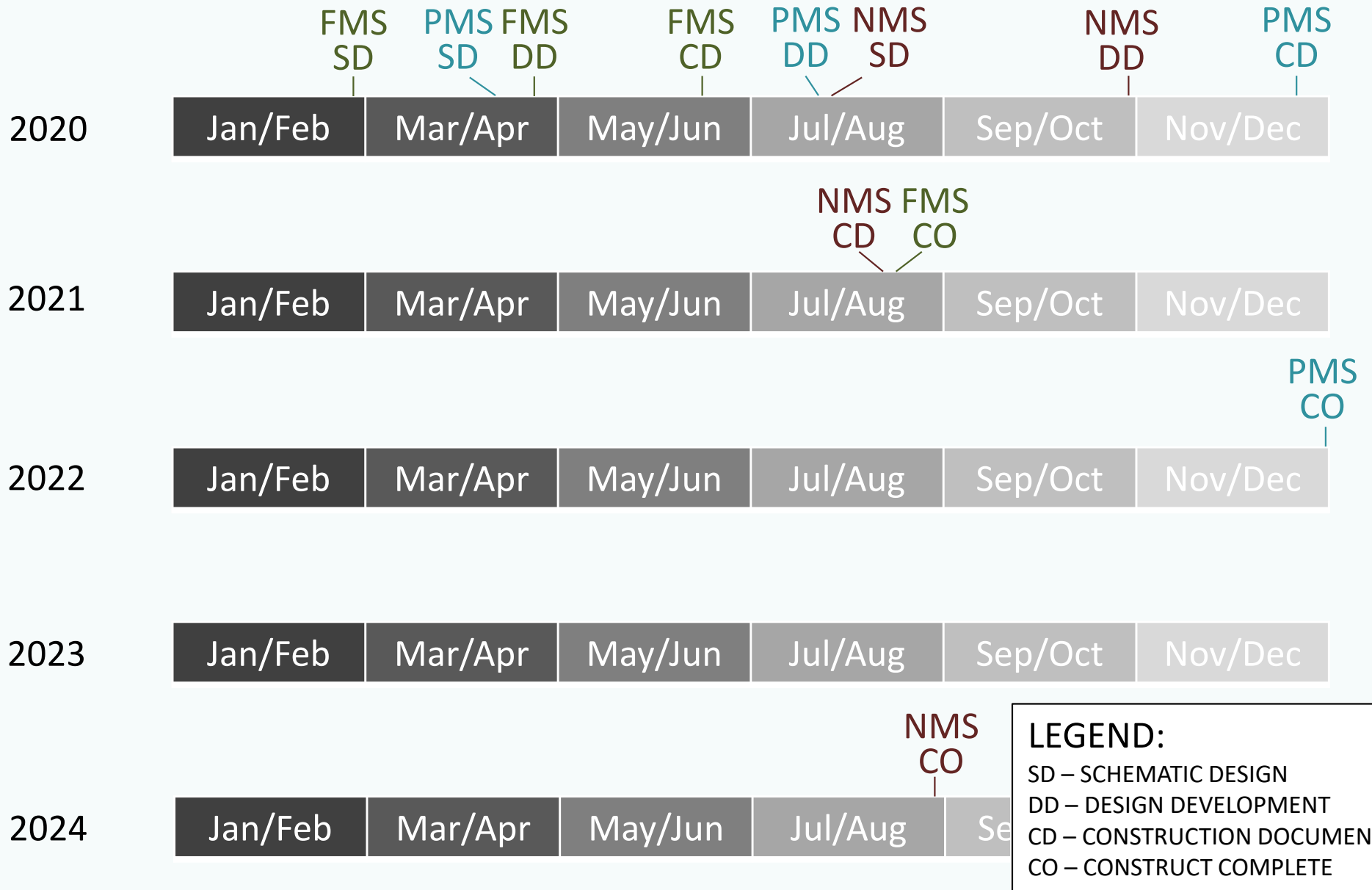


## OVERVIEW |

*“Building a diverse learning community by encouraging students to open their eyes to explore, their minds to create, and their hearts to accept.”*







**LEGEND:**  
 SD – SCHEMATIC DESIGN  
 DD – DESIGN DEVELOPMENT  
 CD – CONSTRUCTION DOCUMENTS  
 CO – CONSTRUCT COMPLETE

**OVERVIEW |**

*“Building a diverse learning community by encouraging students to open their eyes to explore, their minds to create, and their hearts to accept.”*



# FAIRGROUNDS MIDDLE SCHOOL



*“Building a diverse learning community by encouraging students to open their eyes to explore, their minds to create, and their hearts to accept.”*



**BEFORE**



**AFTER**

## Project Recap



*"Building a diverse learning community by encouraging students to open their eyes to explore, their minds to create, and their hearts to accept."*



## FAIRGROUNDS MIDDLE SCHOOL

BEFORE



AFTER



## Project Recap



*“Building a diverse learning community by encouraging students to open their eyes to explore, their minds to create, and their hearts to accept.”*



## FAIRGROUNDS MIDDLE SCHOOL



## Project Recap

*“Building a diverse learning community by encouraging students to open their eyes to explore, their minds to create, and their hearts to accept.”*

FAIRGROUNDS MIDDLE SCHOOL



## Project Recap

*“Building a diverse learning community by encouraging students to open their eyes to explore, their minds to create, and their hearts to accept.”*

FAIRGROUNDS MIDDLE SCHOOL



## Project Recap

.....

## FAIRGROUNDS MIDDLE SCHOOL

*“Building a diverse learning community by encouraging students to open their eyes to explore, their minds to create, and their hearts to accept.”*



**Project Recap** |

*“Building a diverse learning community by encouraging students to open their eyes to explore, their minds to create, and their hearts to accept.”*



**FAIRGROUNDS MIDDLE SCHOOL**





**Project Recap** |

*“Building a diverse learning community by encouraging students to open their eyes to explore, their minds to create, and their hearts to accept.”*



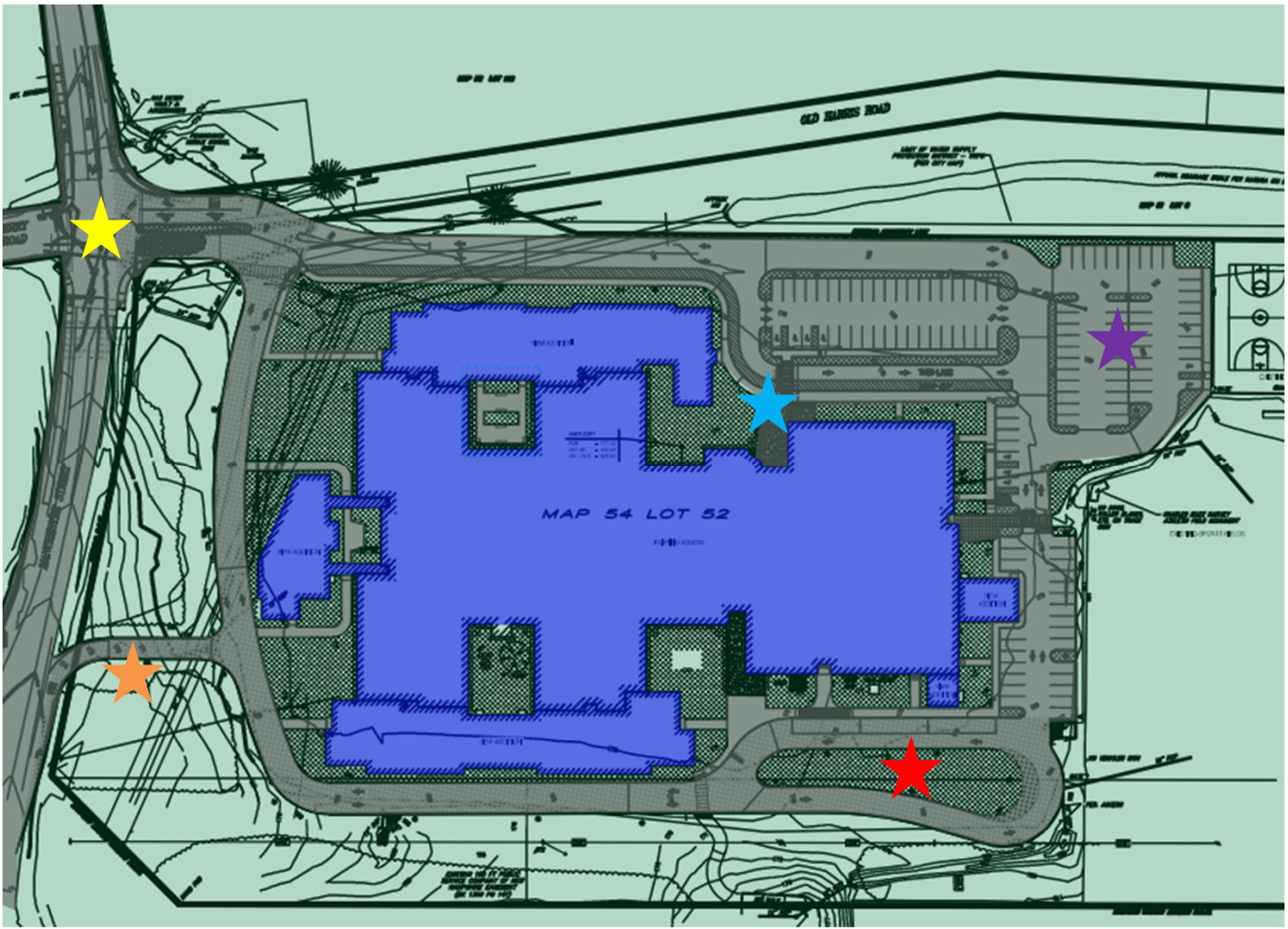
**FAIRGROUNDS MIDDLE SCHOOL**

# PENNICHUCK MIDDLE SCHOOL

.....  
*“Building a diverse learning community by encouraging students to open their eyes to explore, their minds to create, and their hearts to accept.”*

- SITE SCOPE

- ★ Traffic Improvements
- ★ Bus Entry
- ★ Bus Loop
- ★ Parent Loop
- ★ Parking



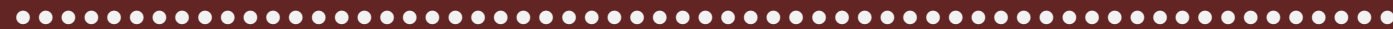
**Project Overview** |

*“Building a diverse learning community by encouraging students to open their eyes to explore, their minds to create, and their hearts to accept.”*

.....  
**PENNICHUCK MIDDLE SCHOOL**



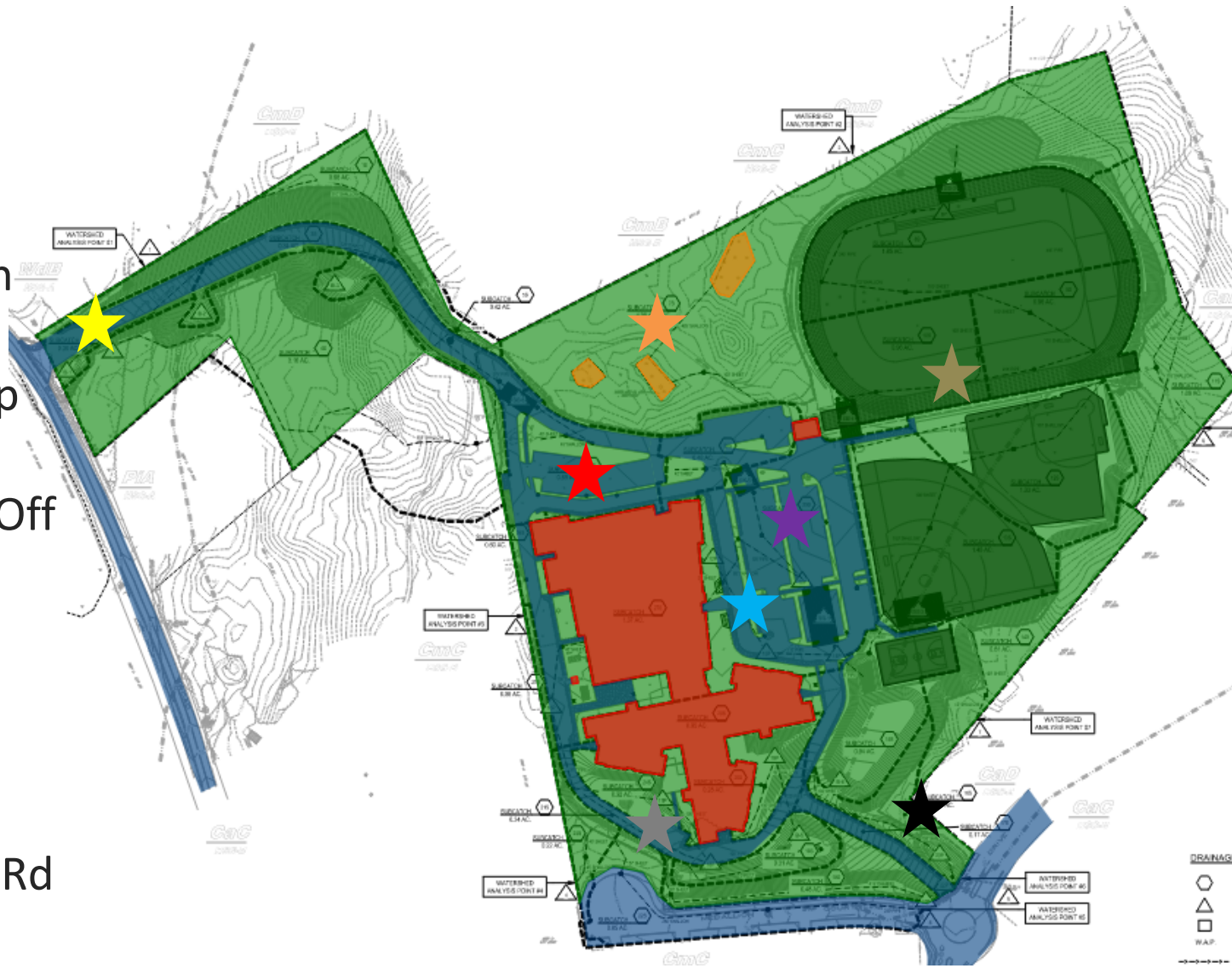
# NEW NASHUA MIDDLE SCHOOL



*“Building a diverse learning community by encouraging students to open their eyes to explore, their minds to create, and their hearts to accept.”*

• SITE SCOPE

- ★ Buckmeadow Rd - Main Access
- ★ Wetland Protection
- ★ Dedicated Bus Loop
- ★ Parent Loop/Drop Off
- ★ Parking
- ★ Playfields
- ★ Emergency Access Rd
- ★ Fire Access Loop



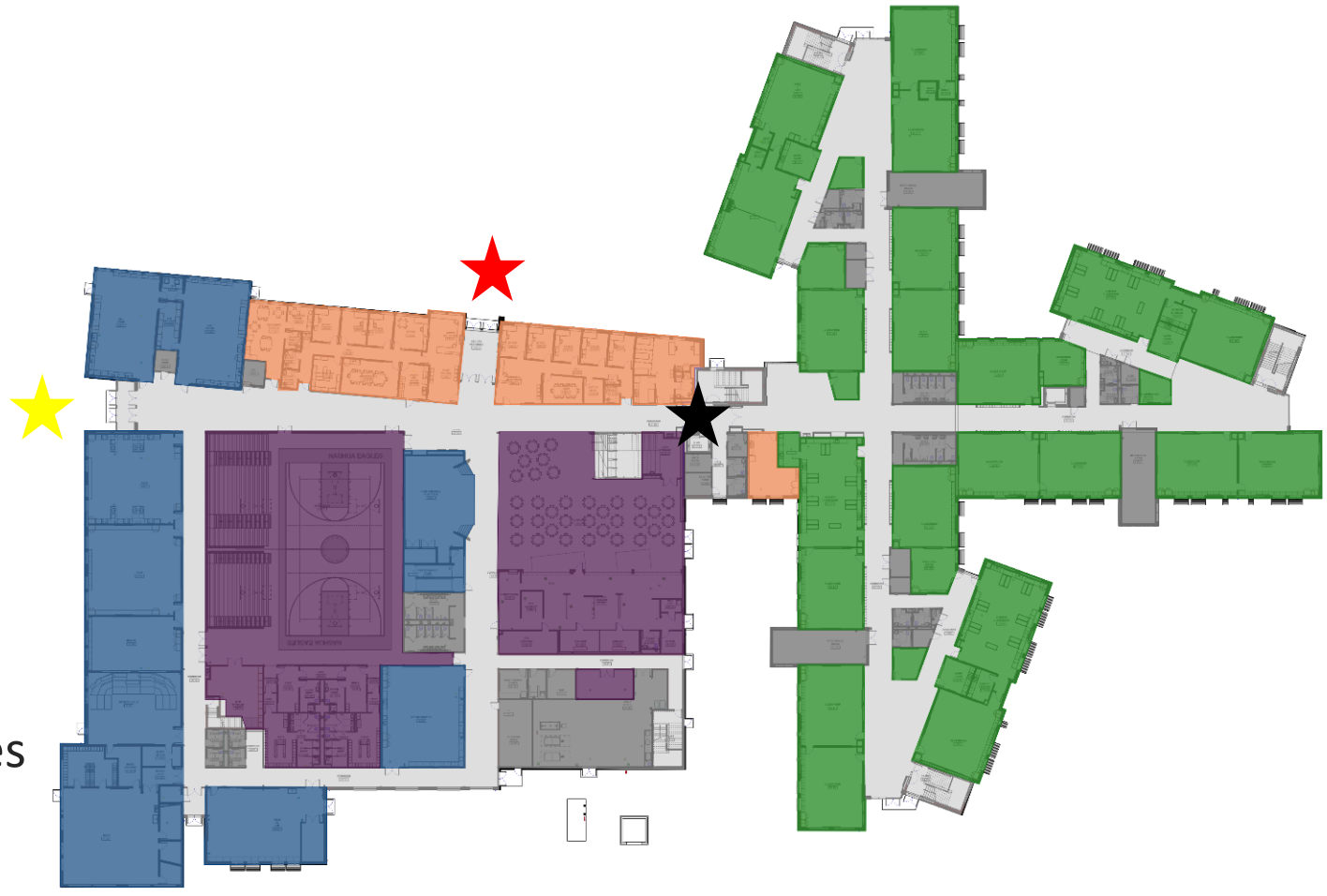
**Project Overview** |

*“Building a diverse learning community by encouraging students to open their eyes to explore, their minds to create, and their hearts to accept.”*

NEW NASHUA MIDDLE SCHOOL

• BUILDING OVERVIEW – FIRST FLOOR

- ★ Secured Entry
- ★ Bus Drop Entry
- ★ Administrative
- ★ UA Programs
- ★ Support Spaces
- ★ Public/Class Jct.
- ★ Classroom Spaces
- ★ Bld. Facilities



**Project Overview** |

*“Building a diverse learning community by encouraging students to open their eyes to explore, their minds to create, and their hearts to accept.”*



**NEW NASHUA MIDDLE SCHOOL**

• BUILDING OVERVIEW – LOWER LEVEL

- ★ Administrative
- ★ UA Programs
- ★ Support Spaces
- ★ Classroom Spaces
- ★ Bld. Facilities



**Project Overview** |

*“Building a diverse learning community by encouraging students to open their eyes to explore, their minds to create, and their hearts to accept.”*

NEW NASHUA MIDDLE SCHOOL



• BUILDING OVERVIEW – SECOND FLOOR

- ★ Administrative
- ★ UA Programs
- ★ Support Spaces
- ★ Classroom Spaces
- ★ Bld. Facilities



**Project Overview** |

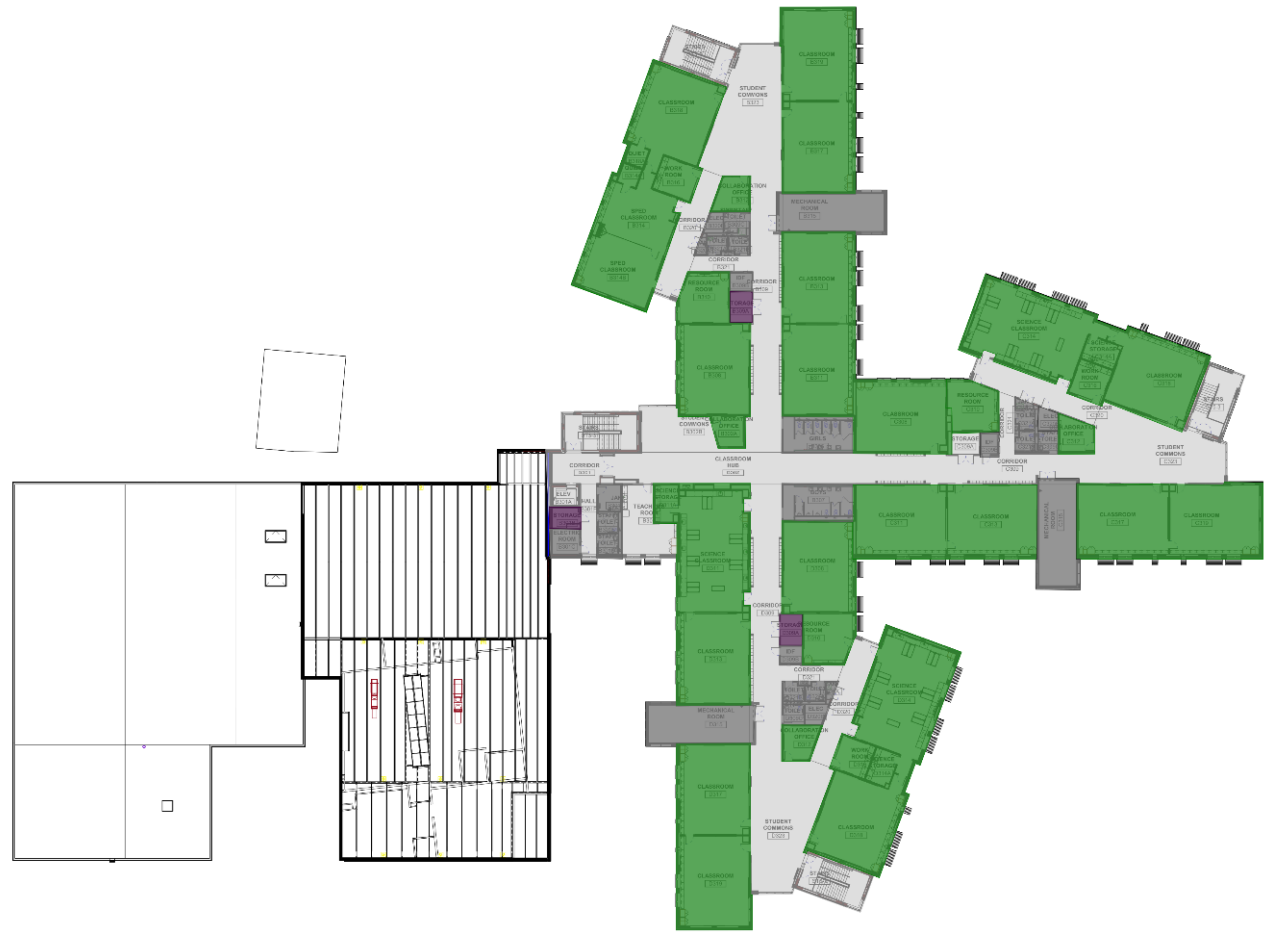
*“Building a diverse learning community by encouraging students to open their eyes to explore, their minds to create, and their hearts to accept.”*



**NEW NASHUA MIDDLE SCHOOL**

• BUILDING OVERVIEW – THIRD FLOOR

- ★ Administrative
- ★ UA Programs
- ★ Support Spaces
- ★ Classroom Spaces
- ★ Bld. Facilities



**Project Overview** |

*“Building a diverse learning community by encouraging students to open their eyes to explore, their minds to create, and their hearts to accept.”*

NEW NASHUA MIDDLE SCHOOL



# Project Overview

*“Building a diverse learning community by encouraging students to open their eyes to explore, their minds to create, and their hearts to accept.”*

NEW NASHUA MIDDLE SCHOOL



**Project Overview** |

*"Building a diverse learning community by encouraging students to open their eyes to explore, their minds to create, and their hearts to accept."*

NEW NASHUA MIDDLE SCHOOL



## Project Overview |

*“Building a diverse learning community by encouraging students to open their eyes to explore, their minds to create, and their hearts to accept.”*

.....

## NEW NASHUA MIDDLE SCHOOL



## Project Overview

*“Building a diverse learning community by encouraging students to open their eyes to explore, their minds to create, and their hearts to accept.”*

NEW NASHUA MIDDLE SCHOOL



## Project Overview

*“Building a diverse learning community by encouraging students to open their eyes to explore, their minds to create, and their hearts to accept.”*

NEW NASHUA MIDDLE SCHOOL



LINCOLN BROWN ILLUSTRATION

## Project Overview

*“Building a diverse learning community by encouraging students to open their eyes to explore, their minds to create, and their hearts to accept.”*

NEW NASHUA MIDDLE SCHOOL



 HARRIMAN

